



LIZZO

Fabric & Wallpaper Editor

NEW COLLECTION

NARA

Headboard Sakura 03, Sofa Sika 13, Cushion Mizu 03



NARA combines exquisite all over embroideries, a Sumi-e styled print in big scale, geometric velvets, a cotton piqué created for bedding and original jacquards that translate us to the Nippon country, through its most emblematic natural landscapes.

Inspired by the traditional Japan of unparalleled elegance and harmony, whose values, such as the beauty of the simplicity and discretion, go hand in hand with LIZZO's philosophy.





Onsen 04, Onsen 14

Sofa Godai 09, Cushions Jade 33, Mizu 03, Sakura 04





Tablecloth Sakura 09



Tablecloth Sakura 09 and Colban 19, Chairs Godai 02



Cushions Mizu 04, Sakura 04

Armchair Dandy 06





Bedlinen Onsen 06, Cushions Mizu 06

Curtain Mizu 09







Curtain Sakura 04





Highchairs Lotus 05, Uda 09

Lotus 04, Lotus 05







Armchair Lotus 09 & Murano 29



Armchair Lotus 09 & Murano 29





Uda 05, Uda 09, Uda 06

Upholstered panels Uda 01, Headboard Sika 08, Bedlinen Onsen 06, Cushions Mizu 06, Bench Eternal 08



JADE



More than any other gemstone, Jade is imprinted in the heart of the culture from all over Southeast Asia, considered a royal gem.

This satin of semi-glossy texture evokes this precious stone, combining the majesty of silk, the durability of cotton and the strength of polyester. It is available in 18 colours ranging from pearl white, make-up tones, emerald or aquamarine.

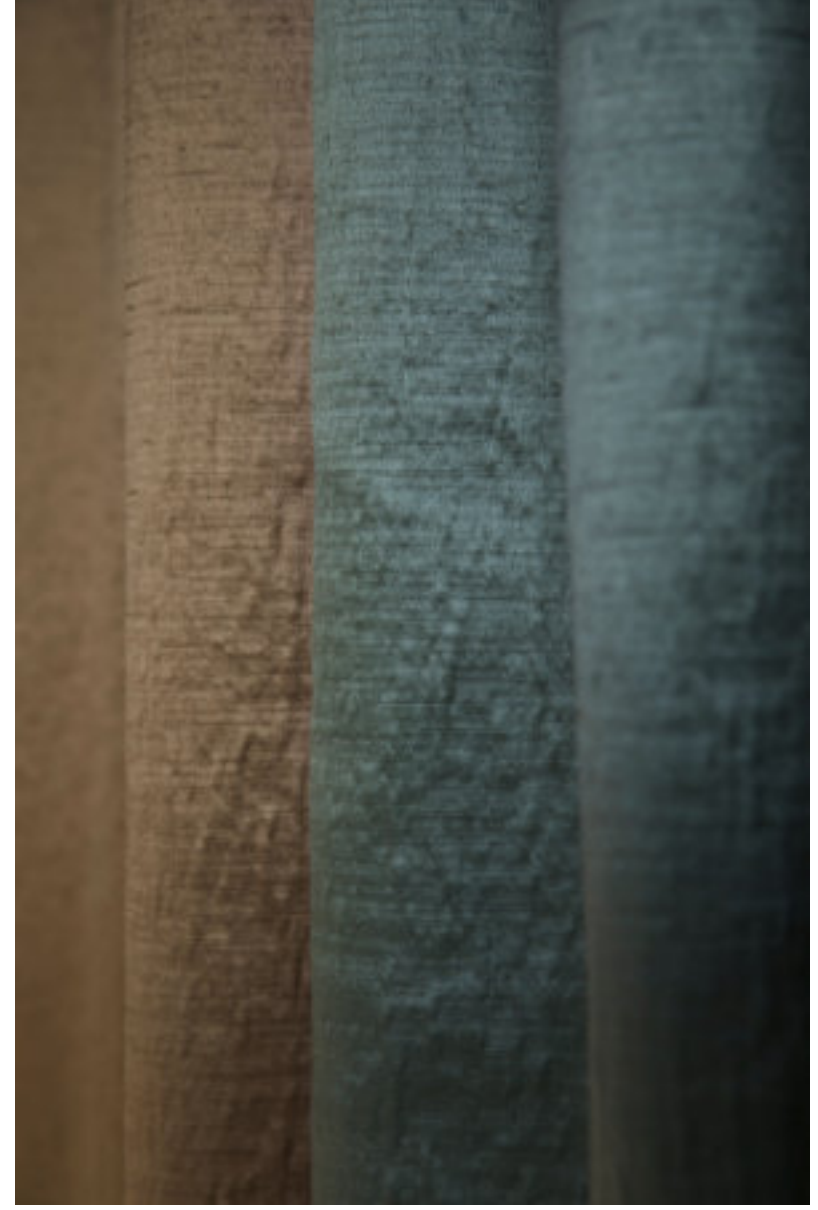
Curtain Jade 05

Curtain Jade 13, Jade 05, Jade 08, Jade 24



Curtain Jade 16, Jade 02, Jade 03

Curtain Jade 02, Jade 04



MINARA & DOGO



Following Japanese tradition, Minara and Dogo are named after two of the most popular Onsen, the thermal baths of volcanic origin.

MINARA is a texture with a subtle shine and a rustic look given by its grain pattern that reminds of a tree bark. This fabric is available in 6 colours.

DOGO is a curtain made of linen and viscose, a beautiful semi-glossy texture with an organic aspect, soft and light. It is available in 5 neutral tones.

Curtain Minara 09



Curtain Dogo 09

GODAI



Godai receives its name from the word used in Japan to refer to the five elements.

With a chenille plain texture and soft handle, it becomes part of our LIZZO essentials. A linen and cotton textile created to become a basic for every residential and hospitality project. It is also easy to clean, and stain and water repellent, it can be found in 24 different colours.

Sofa Godai 09, Cushions Godai 05, Godai 13, Godai 09

Chairs Godai 02







Sofa Sika 13, Cushions Sika 03, Sika 02,
Folding screen Sakura 03, Curtain Wright 16

SIKA



SIKA is an extraordinary jacquard velvet made of cotton and viscose.

It has been created using an innovative technique called pick and pick, with which we have managed to give that diamond pattern and a high density to this velvet of unique richness. In addition, its manufacture is totally sustainable and environmentally friendly as all the energy used on the process is solar with zero hydrocarbon emissions.

BÉTON BRUT



Béton Brut collection is inspired by homonymous architectural style, initiated by Le Corbusier and Auguste Perret, based on imperfections and irregular forms, and displaying all the materials in their natural state.

Consisting of a wide variety of sheers 100% polyester, fire retardant and machine washable, with a natural fibers look: plains, pleats, nets and jacquards created to meet the needs of every residential and hospitality project.

Sheer Rohe 06



Sheer Rohe 06



Sheer Aalto 19





Sheer Nouvel 17

Sheer Hadid 07





Sheer Moneo 09



Sheer Moneo 09



Sheer Foster 19

Sheer Wright 16





Sheer Testa 01



Sheer Rohe 06

SHOWROOMS

EUROPE

LONDON

LIZZO UK. G5 The Design Centre Chelsea Harbour
Ground Floor Centre Dome. SW10 OX E - London,
UK.
Ph. +44 20 7823 3456
london@lizzo.net

AMSTERDAM LOGGERE WILPOWER

Zuidereinde 49 - KL 'S-Graveland - 1243 Amsterdam,
The Netherlands.
Ph. +31 356565200
office@loggerewilpower.com

BRUSSELS - BRUXELLES INTEDE

Quai Des Peniches - Akenkaai 52A – 1000 Bruxelles
- Brussels
Ph. +32 25130261
info@intede.be

MADRID

LIZZO. C/Castelló, 61 - 28001 Madrid, Spain.
Ph. +34 914 260 982
madrid@lizzo.net

MILAN ELITIS, SRL

Via Savona, 97
Ph. +39 024229667
info@elitis.it

MUNICH GEBRÜDER WEISHÄUPL

Schwanthalerstrasse 49, DE 80336 München,
Germany.
Ph. +49 8954424862
iboehm@weishaeupl-textil.de

STOCKHOLM MADERO INTERIOR

Kommendörsgatan 20B
114 48 Stockholm
Ph. +46(0)709 80 66 32
lizzosweden@madero.se

ZÜRICH IMEXHA – AGENTUR FÜR WOHNKULTUR

Forchstrasse 239 - 8032 Zürich
Ph. +41 43 411 82 92
info@imexha.ch

NORTH AMERICA

NEW YORK D&D BUILDING - KRAV ET SHOWROOM

979 3Rd Avenue, Suite #324 - 10022 New York, USA.
Ph. 212.421.6363
jay.podos@kravet.com

ASIA

BEIJING EUROART

Jianke Binguan, A2 Xinghua Road, Anwai Street,
Chaoyang Dist. Beijing.
Ph. +86 1084270361
marketing@china-euroart.com

HONG KONG VERANDA

Chung Mei Centre, Unit A, 4/ F., Block A,15-17 Hing
Yip Street,Kwun Tong, Kln
Ph. + 852 2868 9728
jean@veranda.com.hk

TOKYO TOMITA TEXTILE

6F-A/B Tokyo Design Center, 5-25-19 Higashi
Gotanda
Sanagawa-Ku 141-0022 Tokyo.
Ph. +81 3 5798 7481
info@tominet.co.jp

AUSTRALIA

SYDNEY & MELBOURNE WESTBURY TEXTILES

Ph. +61 2 9380 6644
info@westburytextiles.com

AUCKLAND DIVA HOME

16 Railway Street, Newmarket, Auckland
Ph. +64 9 523 0625
andrew@diva.co.nz

AFRICA

CAPE TOWN HERTEX

12 Bella Rosa St. – Bellville -7530
Ph. +27 21 914 3390
info@hertex.co.za

HEAD OFFICE

SPAIN

ALICANTE

C/ Del Rublo, 63 P.I. Las Atalayas
03114 Alicante, Spain.
Ph. +34 965 932 235
lizzo@lizzo.net
www.lizzo.net

CREDITS

Art Director & Stylist: Fran Cassinello.
Photo: Germán Saiz.
Post-Production: Germán Saiz.
Graphic Design: Ana Amores Estudio.

© 2021 LIZZO - All Rights Reserved.

SOCIAL

WE ARE ON:

Instagram
Facebook
Pinterest

LIZZO

Fabric & Wallpaper Editor

www.lizzo.net